

# State of Wyoming Corner Record

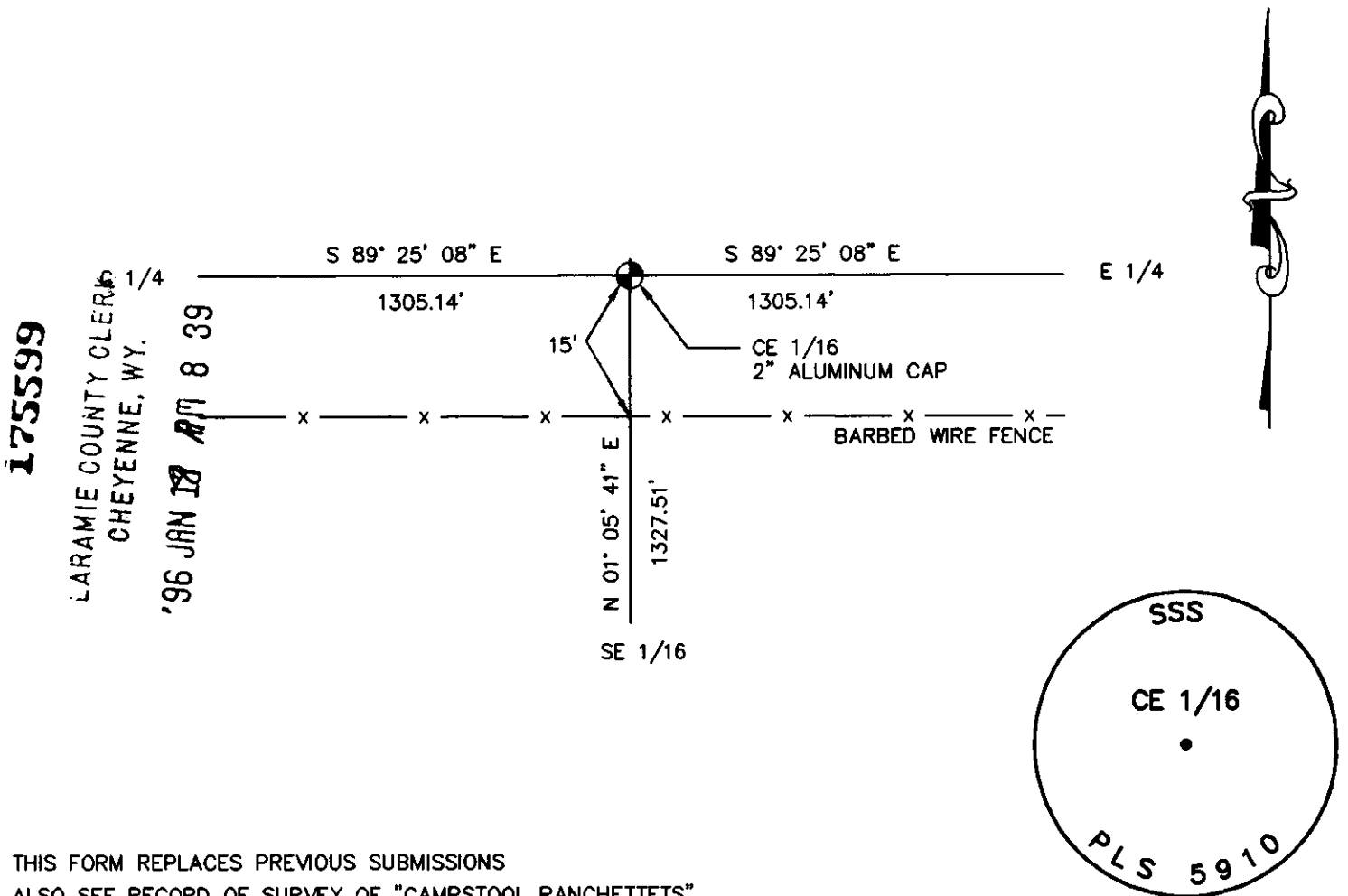
(in compliance with the CORNER PERPETUATION AND FILING ACT, Wyoming Statutes, 1977, Section 36-11-101, et. seq., and the Rules and Regulations of the Board of Registration for Professional Engineers and Professional Land Surveyors)

Reverse side of this form may be used if more space is needed.

Record of original survey and citation of source of historical information (if corner is lost or obliterated). Description of corner monumentation evidence found and/or monument and accessories established to perpetuate the location of this corner. Sketch of relative location of monument, accessories, and reference points with course and distance to adjacent corner(s) (if determined in this survey). Method and rationale for reestablishment of lost or obliterated corner.

MONUMENT FOUND: NONE

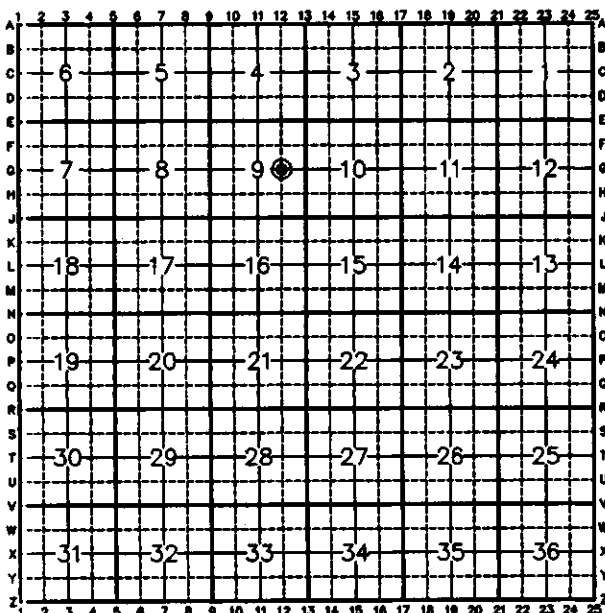
MONUMENT SET: SET 5/8" X 24" REBAR WITH 2" ALUMINUM CAP, STAMPED AS SHOWN BELOW.



THIS FORM REPLACES PREVIOUS SUBMISSIONS  
ALSO SEE RECORD OF SURVEY OF "CAMPSTOOL RANCH TETS"

Date of Field Work: 12-12-94 Office Reference: 94222

**CROSS INDEX DIAGRAM**



Firm/Agency, Address

**STEIL SURVEYING SERVICES, LLC**  
**1102 WEST 19th STREET**  
**CHEYENNE WY 82001**

This corner record was prepared by me or under my direction and supervision.  
SEAL & SIGNATURE

Telephone Number: **(307) 634-7273**



**BOOK 1415**

Corner Name: CE 1/16 Section: 9 T 13N R 64W ; 6th P.M. Cross-Index No.: G-12  
SBRPEPLS/PLSW: March 1994

**0949**